



**EU PRICES of COW's RAW MILK in EURO/100 kg**

Source: Regulation (EU) No 2017/1185 Article 12(a) - Annex II.4(a) (prices of raw milk at real fat and protein content paid to milk producers)

	Belgium	Bulgaria	Czech Rep.	Denmark	Germany	Estonia	Ireland	Greece	Spain	France	Croatia	Italy	Cyprus	Latvia	Lithuania	Luxembourg	Hungary	Malta	Netherlands	Austria	Poland	Portugal	Romania	Slovenia	Slovakia	Finland	Sweden	U. K.	Weighted averages			% compared to previous month (*)	
																													EU-15	EU-13	EU (weight. avg.)		
2016m01	26.84	28.66	26.37	29.71	28.92	23.43	28.26	41.59	29.90	30.43	31.81	34.38	58.49	22.00	22.57	29.00	24.76	46.14	29.25	33.22	26.14	28.64	27.27	27.45	27.53	38.07	32.45	29.90	30.22	26.21	<b>29.65</b>	-3.1%	Jan-16
2016m02	25.81	28.17	25.49	<b>28.69</b>	28.13	23.20	27.58	40.63	29.71	30.10	29.86	34.09	57.52	21.42	21.42	28.37	24.56	44.12	29.25	31.73	25.60	28.00	26.92	26.65	26.87	37.83	31.03	28.82	29.61	25.58	<b>29.04</b>	-2.1%	Feb-16
2016m03	24.79	27.29	24.51	29.37	27.31	22.74	24.18	38.92	29.42	29.99	29.98	32.14	56.32	20.70	20.73	28.48	23.73	43.66	28.50	31.70	25.71	27.98	26.30	25.13	25.89	37.55	31.43	27.92	28.87	25.24	<b>28.35</b>	-2.4%	Mar-16
2016m04	24.08	25.72	23.56	28.48	25.74	21.92	24.08	38.00	28.93	29.39	29.10	31.49	54.74	19.49	19.38	27.59	22.55	42.94	27.50	30.78	24.43	28.01	24.78	23.64	24.72	37.46	31.17	26.48	27.92	24.01	<b>27.36</b>	-3.5%	Apr-16
2016m05	22.85	24.73	22.52	27.42	23.97	21.19	23.99	37.56	28.35	28.78	28.78	31.07	54.71	18.24	17.94	26.10	21.67	43.97	25.00	29.77	23.33	27.59	21.81	23.46	23.67	37.12	29.60	25.50	26.77	22.89	<b>26.22</b>	-4.2%	May-16
2016m06	22.26	24.60	22.02	26.22	23.18	20.24	23.50	37.35	27.96	28.68	28.16	30.63	55.00	17.78	16.91	25.04	21.02	45.03	25.00	29.26	23.12	27.40	21.62	23.16	23.17	36.64	27.96	24.59	26.24	22.51	<b>25.71</b>	-1.9%	Jun-16
2016m07	22.12	25.03	21.96	26.08	23.42	20.04	24.47	37.52	27.77	28.51	27.89	30.63	54.97	17.71	16.92	24.72	20.96	45.82	25.00	29.37	23.29	26.98	22.67	23.34	23.12	35.37	27.24	24.03	26.18	22.63	<b>25.68</b>	-0.1%	Jul-16
2016m08	24.67	25.88	22.34	26.21	24.30	20.75	27.00	37.89	28.16	29.41	28.37	30.47	54.85	18.64	17.86	25.07	22.07	46.30	25.00	29.90	24.95	26.84	23.59	24.15	23.39	35.64	28.35	24.36	26.86	23.82	<b>26.43</b>	+2.9%	Aug-16
2016m09	26.85	27.14	23.13	27.39	26.37	23.30	29.91	38.28	28.74	30.20	28.86	31.32	55.12	21.14	21.17	26.54	23.42	47.68	26.25	29.84	26.41	27.10	25.27	24.76	24.21	36.48	29.60	25.88	28.23	25.32	<b>27.82</b>	+5.2%	Sep-16
2016m10	30.46	28.91	24.36	29.43	30.42	26.39	32.83	38.64	29.71	31.59	30.13	31.32	56.16	24.89	25.88	29.13	25.28	48.92	29.25	31.43	28.30	27.38	27.90	26.09	25.78	37.40	31.66	26.35	30.34	27.43	<b>29.93</b>	+7.6%	Oct-16
2016m11	33.68	29.85	25.68	<b>31.52</b>	33.14	29.61	36.32	38.65	30.39	32.35	30.71	31.99	56.81	28.26	28.88	31.94	27.14	47.51	33.00	33.05	29.62	28.05	29.35	27.35	27.05	37.83	33.07	28.51	32.31	29.01	<b>31.84</b>	+6.4%	Nov-16
2016m12	35.97	30.66	27.02	<b>33.63</b>	33.67	32.34	35.06	38.80	30.39	32.72	31.30	34.34	57.33	30.41	29.91	33.97	28.39	46.46	37.50	34.70	30.67	29.26	30.46	28.18	28.29	37.55	34.79	30.14	33.54	30.18	<b>33.06</b>	+3.8%	Dec-16
2017m01	34.97	30.94	27.90	35.37	34.13	32.66	35.45	38.71	30.68	34.23	31.69	36.25	57.14	31.01	30.32	35.18	29.53	47.16	34.50	34.88	30.21	28.31	30.82	28.58	29.15	37.32	37.00	30.38	33.96	30.27	<b>33.43</b>	+1.1%	Jan-17
2017m02	34.10	30.95	28.79	36.45	33.97	32.55	34.18	37.37	30.68	33.26	31.85	36.43	56.28	30.00	29.71	34.57	29.78	45.59	35.00	34.88	30.57	28.32	30.16	28.55	29.52	37.19	37.90	31.25	33.86	30.46	<b>33.38</b>	-0.2%	Feb-17
2017m03	33.73	30.88	29.26	<b>36.85</b>	33.56	32.13	31.66	37.93	30.49	32.61	31.37	36.64	55.27	29.50	28.59	34.41	29.56	45.07	36.00	34.83	30.52	28.70	29.66	28.68	29.51	37.18	37.88	30.79	33.58	30.32	<b>33.12</b>	-0.8%	Mar-17
2017m04	33.44	30.00	29.88	35.76	33.49	31.06	31.66	37.96	30.39	33.61	31.06	36.32	55.12	29.23	27.73	33.81	29.62	44.81	36.00	34.58	30.66	28.72	28.79	28.66	29.79	37.10	36.70	30.82	33.64	30.30	<b>33.17</b>	+0.2%	Apr-17
2017m05	32.95	29.33	<b>30.42</b>	<b>34.68</b>	33.83	30.76	32.63	37.90	30.29	32.43	30.87	36.62	54.42	28.82	26.79	32.98	29.50	45.17	36.00	34.68	30.95	28.60	26.90	28.47	29.86	36.96	35.34	30.44	33.42	30.29	<b>32.97</b>	-0.6%	May-17
2017m06	33.19	28.98	31.02	<b>34.35</b>	34.38	31.55	33.60	38.02	30.10	32.32	30.54	36.62	54.67	29.15	26.64	32.86	29.51	45.17	36.75	35.82	31.25	28.74	26.28	28.97	29.99	36.79	34.54	29.64	33.55	30.51	<b>33.12</b>	+0.4%	Jun-17
2017m07	34.66	29.31	31.54	36.58	35.89	32.78	34.96	38.02	30.10	34.04	30.67	36.78	55.30	29.81	27.74	33.63	29.88	46.73	37.25	36.76	31.61	28.47	26.66	29.85	30.49	37.41	36.59	30.45	34.70	31.00	<b>34.17</b>	+3.2%	Jul-17
2017m08	34.50	29.85	31.60	37.51	37.44	32.94	37.68	38.00	30.68	34.98	31.46	36.78	55.30	30.05	28.65	35.02	30.13	50.85	38.50	37.50	32.57	29.85	26.91	32.42	30.91	37.57	37.78	31.61	35.79	31.72	<b>35.21</b>	+3.0%	Aug-17
2017m09	35.50	30.39	32.49	38.44	37.44	33.00	<b>38.36</b>	<b>38.68</b>	30.68	35.57	32.47	<b>37.44</b>	55.96	31.13	31.13	36.55	30.10	50.85	40.50	39.10	32.82	29.85	27.25	31.44	30.89	37.77	38.94	32.68	<b>36.45</b>	<b>32.19</b>	<b>35.85</b>	<b>+1.8%</b>	Sep-17

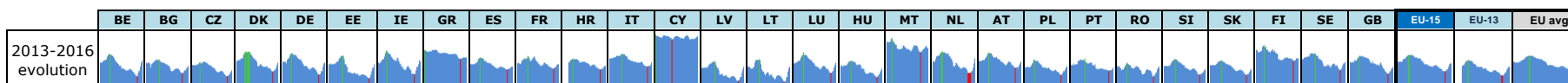
Yellow box: Estimations DG AGRI-C3

Orange box: Estimations based on LTO / national statistics

Grey box: "estimated" prices by MS (indicator of price movement, not to be relied upon to forecast prices)

Price of Aug 17 compared to :

	BE	BG	CZ	DK	DE	EE	IE	GR	ES	FR	HR	IT	CY	LV	LT	LU	HU	MT	NL	AT	PL	PT	RO	SI	SK	FI	SE	GB	EU-15	EU-13	EU avg
Jul 17	-0.5%	+1.8%	+0.2%	+2.5%	+4.3%	+0.5%	+7.8%	-0.1%	+1.9%	+2.8%	+2.6%	idem	idem	+0.8%	+3.3%	+4.1%	+0.8%	+8.8%	+3.4%	+2.0%	+3.0%	+4.8%	+0.9%	+8.6%	+1.4%	+0.4%	+3.3%	+3.8%	<b>+3.1%</b>	<b>+2.3%</b>	<b>+3.0%</b>
Aug 16	+40%	+15%	+41%	+43%	+54%	+59%	+40%	+0%	+9%	+19%	+11%	+21%	+1%	+61%	+60%	+40%	+37%	+10%	+54%	+25%	+31%	+11%	+14%	+34%	+32%	+5%	+33%	+30%	<b>+33%</b>	<b>+33%</b>	<b>+33%</b>



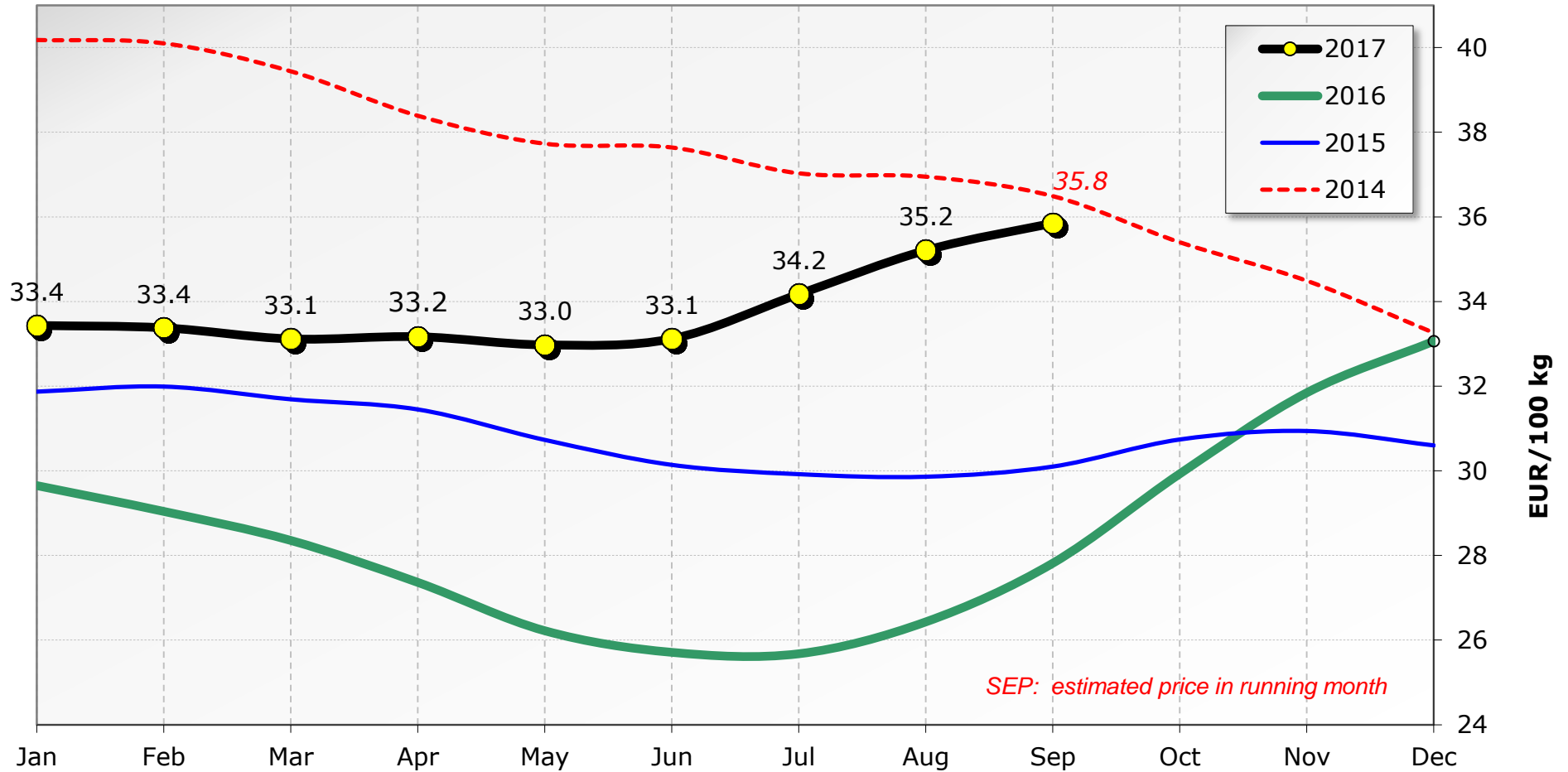
Red lines show maximum values

Max since Jan 2013	41.9	37.0	35.1	43.5	42.5	40.3	44.9	45.5	38.3	39.8	37.8	41.8	58.9	35.2	37.0	42.9	35.7	56.1	44.0	42.7	37.2	37.8	33.8	37.3	36.0	49.5	42.5	40.0	41.0	36.4	40.3
	Dec 13	Mar 14	Oct 13	Nov 13	Nov 13	Mar 14	Nov 13	Jan 13	Dec 13	Jan 14	Dec 13	Mar 14	Jan 13	Mar 14	Feb 14	Dec 13	Jan 14	Jul 13	Nov 13	Dec 13	Dec 13	Apr 14	Dec 13	Feb 14	Feb 14	Oct 13	Mar 14	Nov 13	Nov 13	Dec 13	Dec 13

Min since Jan 2013	22.1	24.6	22.0	26.1	23.2	20.0	23.5	37.4	27.8	28.5	27.9	30.5	54.4	17.7	16.9	24.7	21.0	42.9	25.0	29.3	23.1	26.8	21.6	23.2	23.1	35.4	27.2	24.0	26.2	22.5	25.7
	Jul 16	Jun 16	Jul 16	Jul 16	Jun 16	Jul 16	Jun 16	Jun 16	Jul 16	Jul 16	Jul 16	Aug 16	May 17	Jul 16	Jun 16	Jul 16	Jul 16	Apr 16	May 16	Jun 16	Jun 16	Aug 16	Jun 16	Jun 16	Jul 16	Jul 16	Jul 16	Jul 16	Jul 16	Jun 16	Jul 16

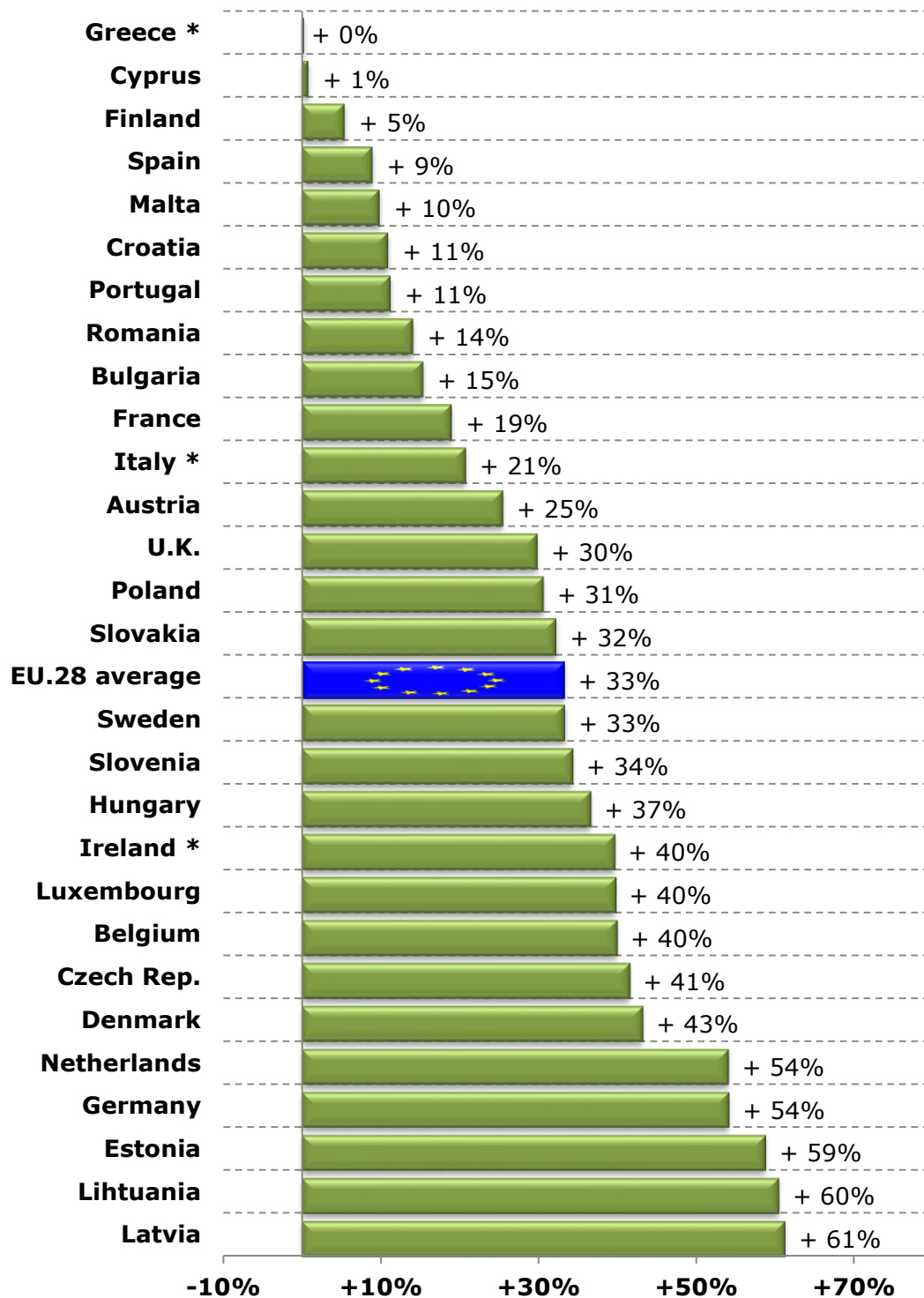
# Milk Prices paid to the Producers

## EU (weight. avg.)



Source : Member States Reg. (EU) No 2017/1185 Article 12(a) - Annex II.4(a)

## Raw Milk Price evolution in August 2017 compared to August 2016



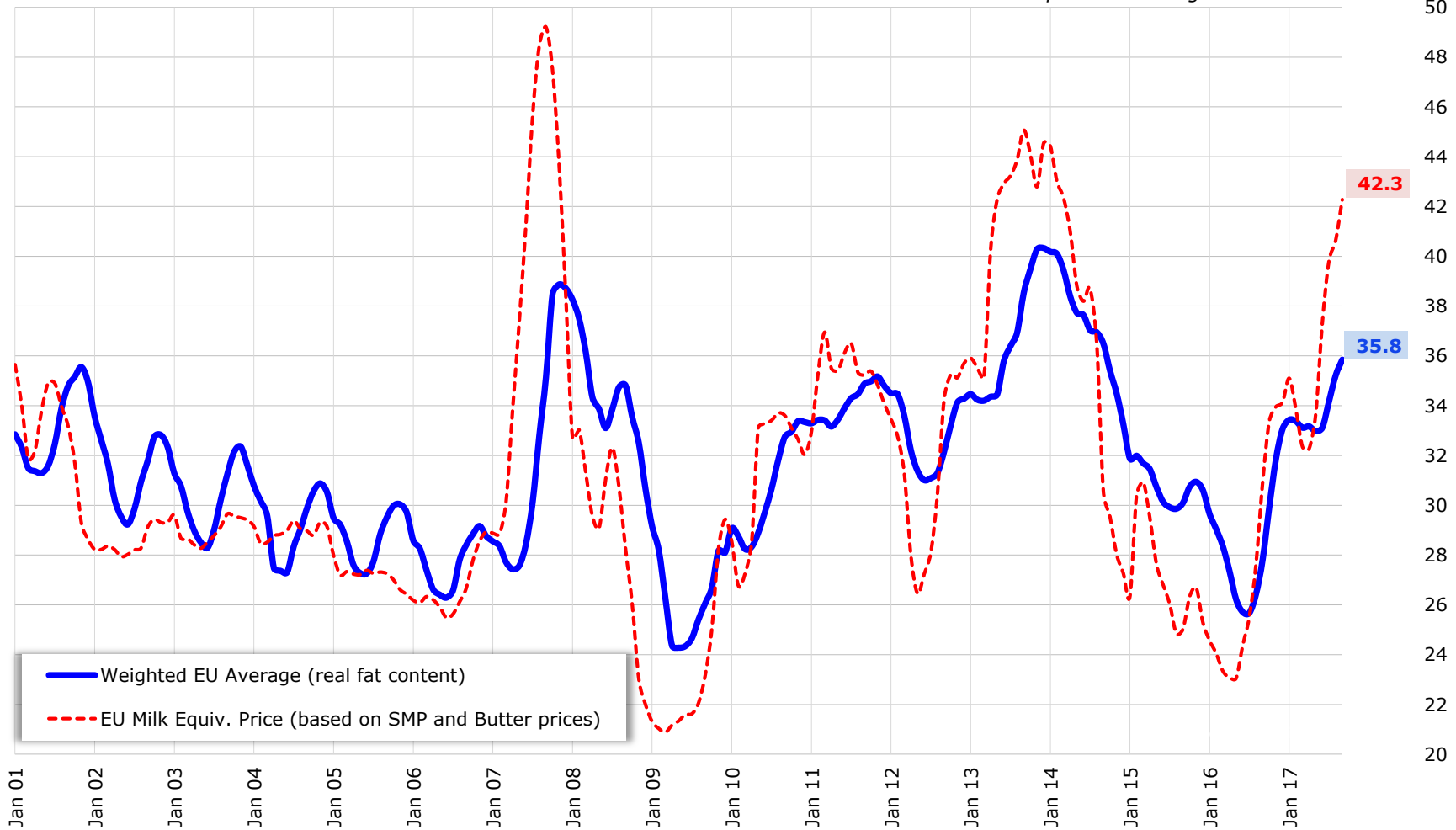
\* : estimated figures for Aug 2017

*Source : Member States (Reg. (EU) No 2017/1185 Article 12(a) - Annex II.4(a))*

# EU Raw Milk Prices Evolution (up to September 2017\*)

EUR/100 kg

\* : estimated price in running month



Source : MS' communications under Reg. (EU) No 2017/1185 Article 12(a) - Annex II.4(a)

# EU MILK PRICES

( Aug 2017 vs Aug 2016 )

Source : Member States (Regulation (EU) No 2017/1185 Article 12(a) - Annex II.4(a))

